

EMERALD LAKES PHASES VI & VII

BEING A REPLAT OF A PORTION OF EMERALD LAKES AS RECORDED
IN PLAT BOOK 9, PAGE 22 OF THE PUBLIC RECORDS OF MARTIN
COUNTY, FLORIDA.

I, Louise V. Isaacs, Clerk of the Circuit Court of Martin County
Florida, hereby certify that this plat was filed for record in Plat Book
9, Page 67, Martin County, Florida, Public Records this
day of _____, 1983.

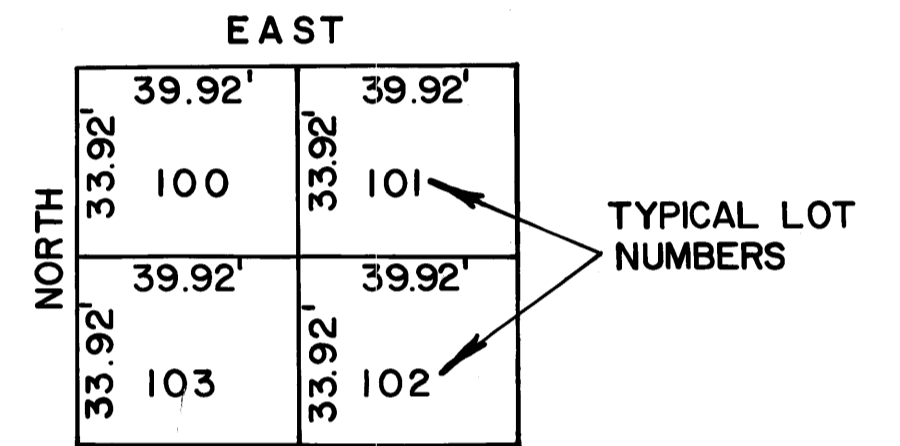
LOUISE V. ISAACS, CLERK
CIRCUIT COURT
MARTIN COUNTY, FLORIDA

BY: _____
Deputy Clerk

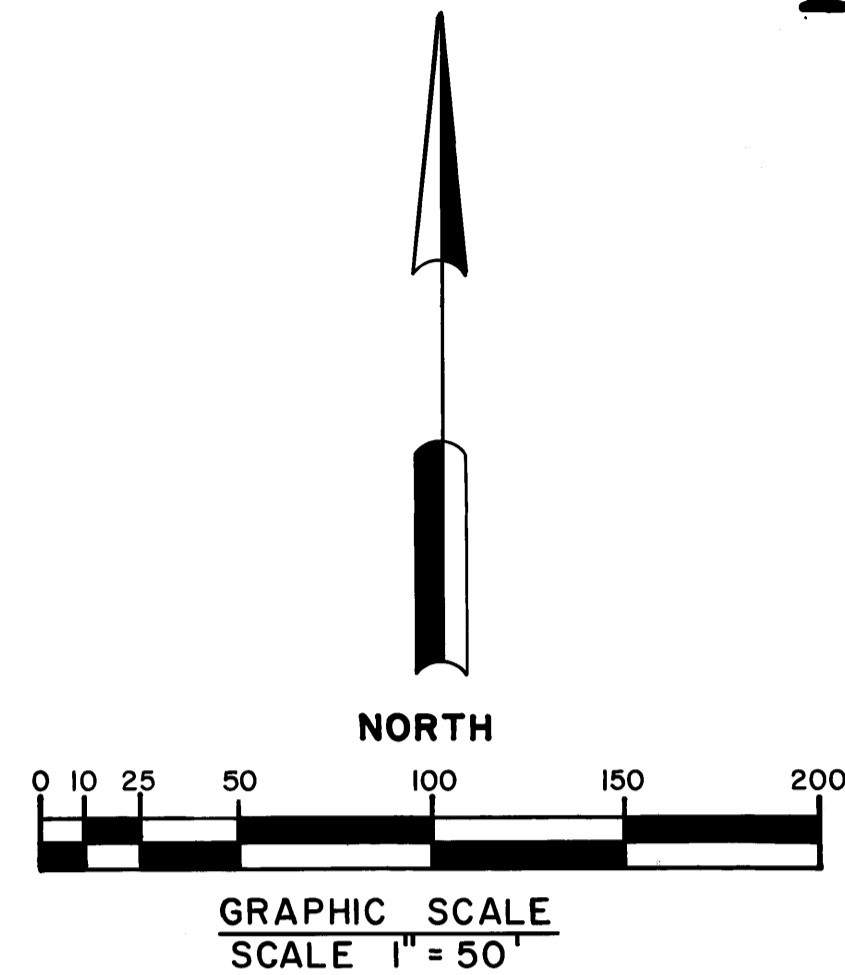
File No. _____

THIS INSTRUMENT PREPARED BY:
LEO E NOBLE R.L.S. 3143 STATE OF FLORIDA
LAWSON & NOBLE, INC.
ENGINEERS - PLANNERS - SURVEYORS
LAKE WORTH, FLORIDA

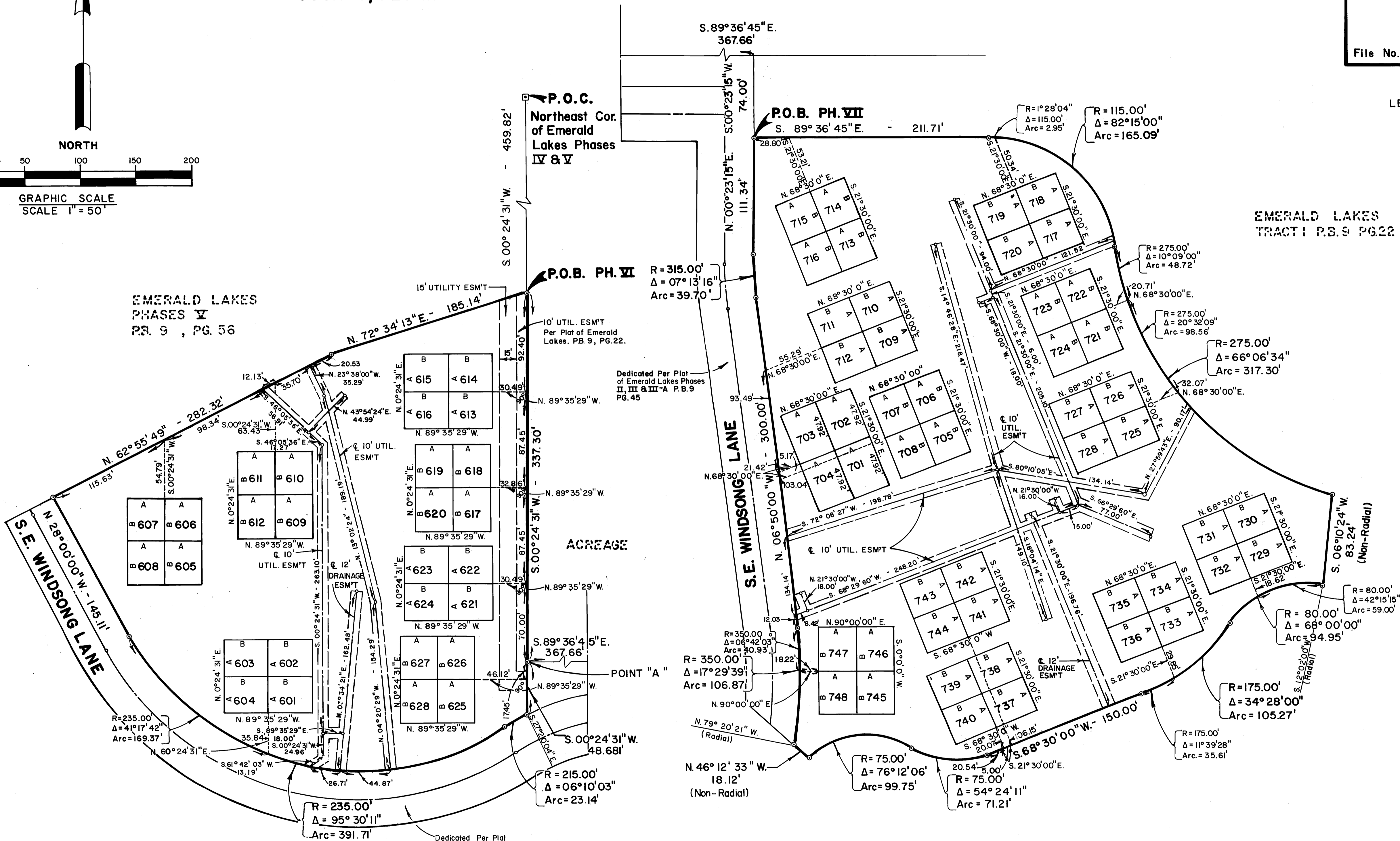
EMERALD LAKES
TRACT 1 P.B. 9 PG. 22



TYPICAL LOT LAYOUT
(OR AS NOTED)



EMERALD LAKES
PHASES V
P.B. 9, PG. 56



EMERALD LAKES
PHASES II & III
P.B. 9, PG. 44

WATER MANAGEMENT TRACT 3
EMERALD LAKES PHASE I-B
P.B. 9, PG. 44

⊙ Denotes Permanent Reference Monument (P.R.M.)
○ Denotes Permanent Control Point (P.C.P.)
Bearings shown hereon refer to an assumed bearing
based on the South line of Section 25, Township
38 S., Range 41 E.

"A" denotes a distance of 33.92 feet
"B" denotes a distance of 39.92 feet

8-11-83 11:11